

# Delaware Libraries - Library Profiles

**LIBRARY**                      **HARRINGTON PUBLIC LIBRARY**  
**ADDRESS**                    110 E. Center St.  
                                         Harrington, DE 19952

**TYPE OF LIBRARY:**  
Small Community

**PHONE #** (302) 398-4647

**FAX #** (302) 398-3847

## HOURS

Sunday	CLOSED
Monday	10:00 AM - 6:00 PM
Tuesday	11:30 AM - 8:00 PM
Wednesday	10:00 AM - 6:00 PM
Thursday	11:30 AM - 8:00 PM
Friday	10:00 AM - 6:00 PM
Saturday	10:00 AM - 2:00 PM

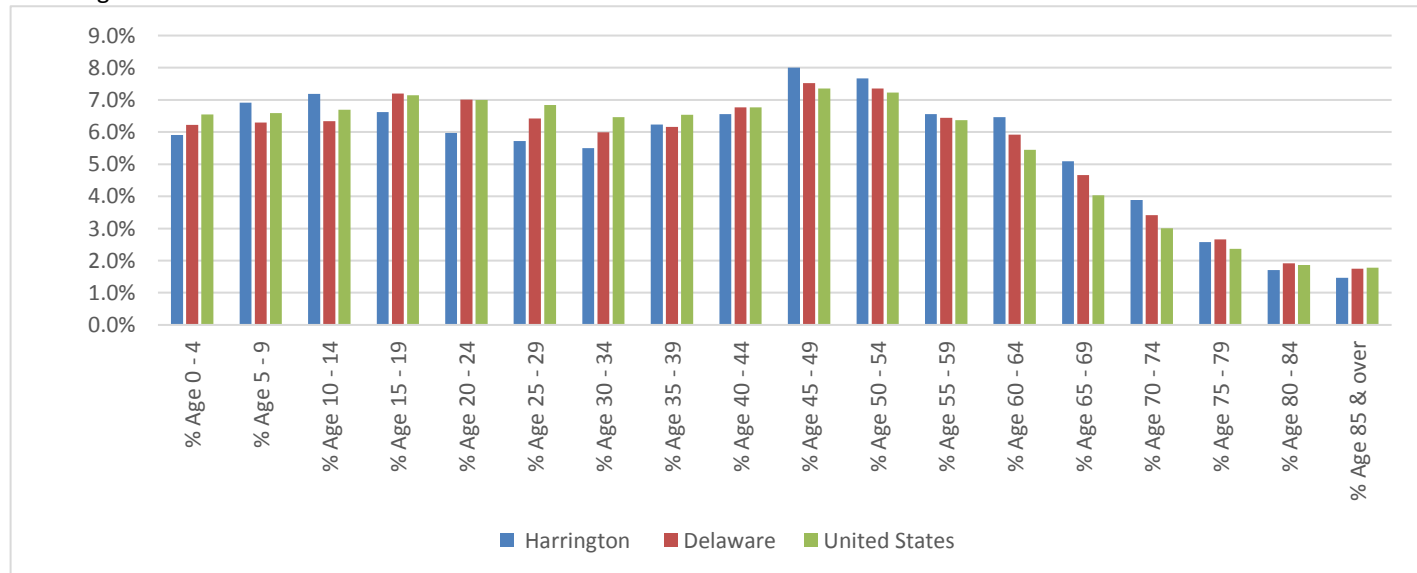


<b>SIZE OF FACILITY</b>	2,000 Square Feet
<b>YEAR BUILT</b>	0
<b>YEAR OF LAST MAJOR RENOVATION</b>	0
<b>YEAR OF LAST ADDITION</b>	0

<b>PRIMARY SERVICE POPULATION</b>	Harrington
2014 Primary Service Population*	11,129
*(Unduplicated count using usage mapping at the census block level)	
DDL Service Population**	12,346
**University of Delaware using centroid method	

## PRIMARY SERVICE AREA POPULATION COHORTS

Estimated Population	Cohort	Harrington	Delaware	United States
657	% Age 0 - 4	5.9%	6.2%	6.5%
769	% Age 5 - 9	6.9%	6.3%	6.6%
800	% Age 10 - 14	7.2%	6.3%	6.7%
737	% Age 15 - 19	6.6%	7.2%	7.1%
664	% Age 20 - 24	6.0%	7.0%	7.0%
636	% Age 25 - 29	5.7%	6.4%	6.8%
612	% Age 30 - 34	5.5%	6.0%	6.5%
693	% Age 35 - 39	6.2%	6.2%	6.5%
730	% Age 40 - 44	6.6%	6.8%	6.8%
890	% Age 45 - 49	8.0%	7.5%	7.4%
853	% Age 50 - 54	7.7%	7.4%	7.2%
730	% Age 55 - 59	6.6%	6.4%	6.4%
719	% Age 60 - 64	6.5%	5.9%	5.4%
567	% Age 65 - 69	5.1%	4.7%	4.0%
432	% Age 70 - 74	3.9%	3.4%	3.0%
287	% Age 75 - 79	2.6%	2.7%	2.4%
190	% Age 80 - 84	1.7%	1.9%	1.9%
163	% Age 85 & over	1.5%	1.7%	1.8%



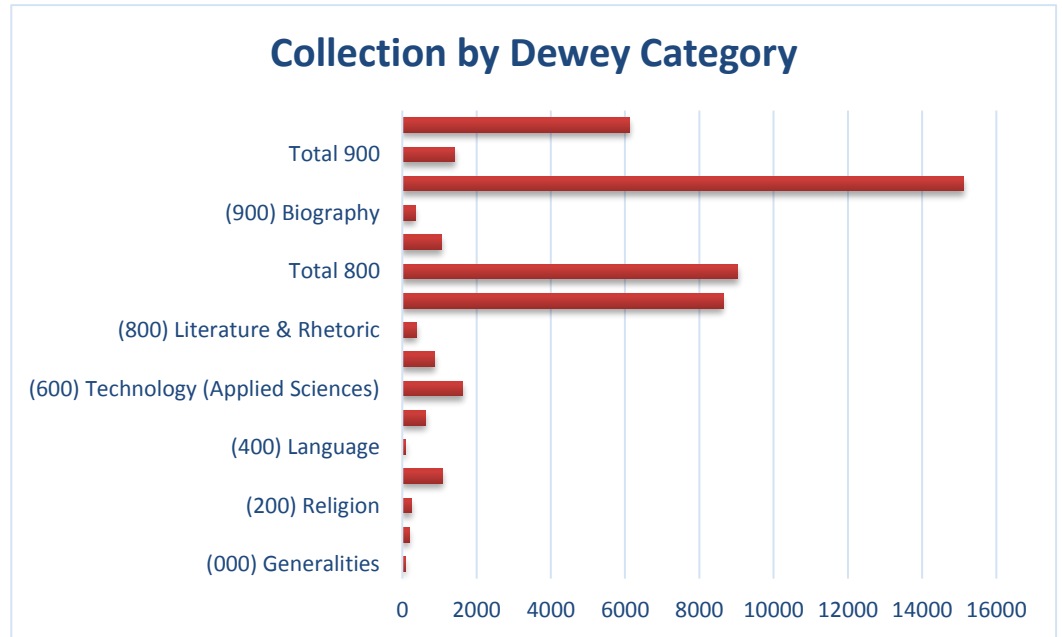
**INPUT DATA**

Annual Hours of Operation (2014)		2340
Annual Operational Costs (2014)	\$	178,372
Staff in FTEs		3.45
Total Volumes/Items in Collection		21,131
Children's Volumes		8,401
Teen Volumes		934
Adult Volumes		11,796
Print Volumes		19,007
Non-Print/Media Volumes		2,124
Number of Public Computers		14
Number of Public Parking Spaces		0 Data not reported
Recommended Public Parking Spaces		8
Public Parking Spaces Surplus/Deficit		-8

## INPUT DATA (continued)

### Collection by Dewey Category

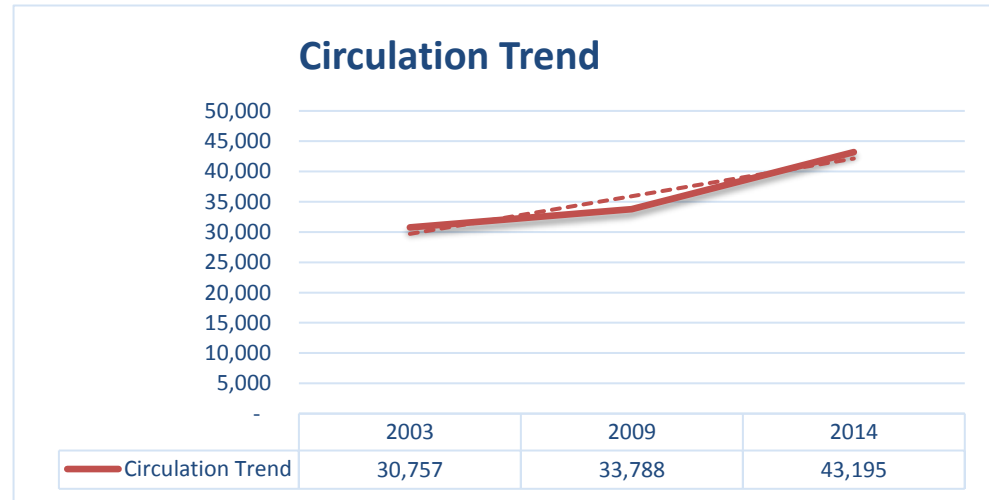
(000) Generalities	82
(100) Philosophy & Psychology	188
(200) Religion	245
(300) Social Sciences	1092
(400) Language	83
(500) Natural Sciences & Mathematics	621
(600) Technology (Applied Sciences)	1629
(700) The Arts	864
(800) Literature & Rhetoric	385
(800) Fiction	8638
Total 800	9023
(900) Geography & History	1060
(900) Biography	351
( All Non Dewey Total )	15114
Total 900	1411
Non-Dewey	6125



## OUTPUT DATA

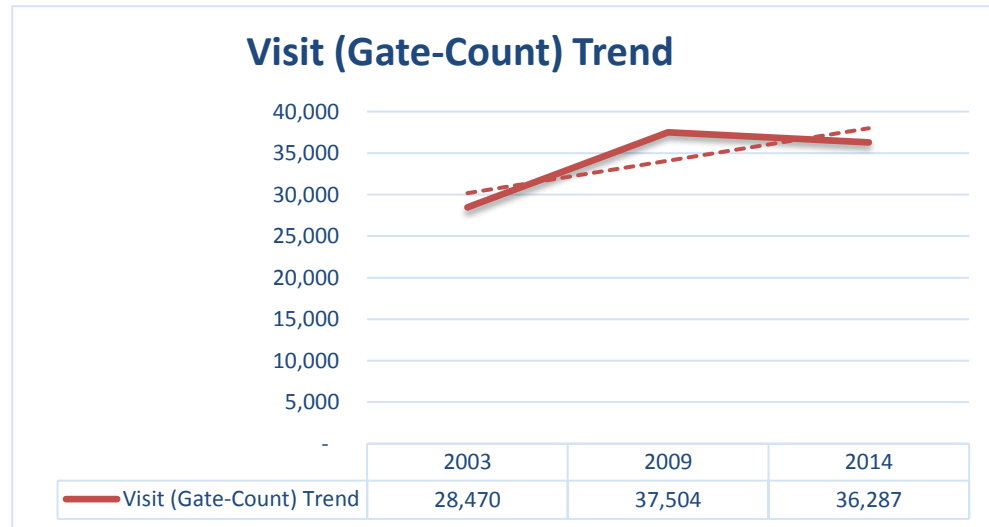
### Circulation Trend

2003	30,757
2009	33,788
2014	43,195

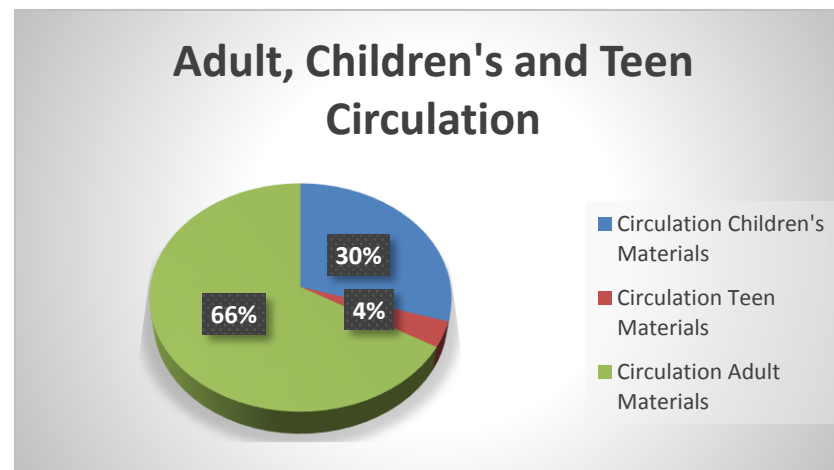
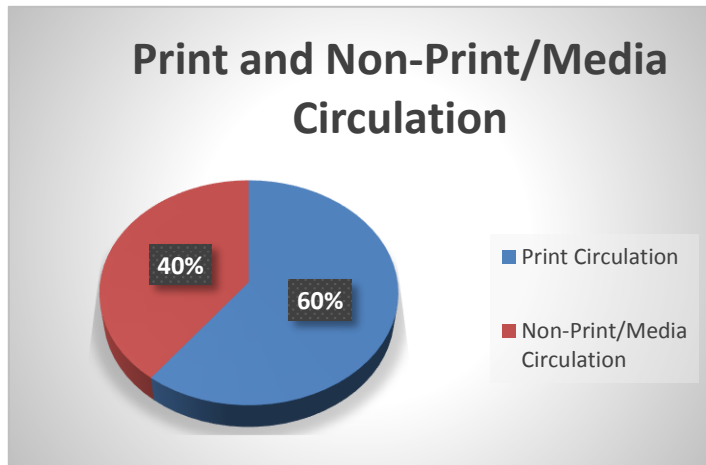


### Visit (Gate-Count) Trend

2003	28,470
2009	37,504
2014	36,287



<b>OUTPUT DATA (continued)</b>	Circulation	Circulation %
Print Circulation	24,539	60.38%
Non-Print/Media Circulation	16,100	39.62%
Circulation Children's Materials	12,115	29.81%
Circulation Teen Materials	1,487	3.66%
Circulation Adult Materials	27,037	66.53%



	Number	Rank
2014 Overdrive Circulation	2,676	25 of 33
2014 Circulation	43,195	29 of 33
2014 Visits (Gate-Count)*	36,287	29 of 33
2014 Reference Transactions*	1,241	18 of 33
2014 Program Attendance*	2,395	29 of 33
2014 Public Computer Sessions*	1,915	26 of 33
2014 Total # of Public Contacts <sup>1</sup>	85,138	30 of 33

<sup>1</sup> Total contacts = Circulation + Gate Count + Reference Transactions + Program Attendance + Computer Sessions

\* In a few instances, individual libraries have not reported all data elements of their FY 2014 statistics.

In these instances, measures reported for FY 2013 have been used.

## DERIVATIVE MEASURES

	2014 Number	2014 Rank	2009 Rank	2003 Rank
Turnover Rate	2.03	22 of 33		21 of 33
Per Capita Measures				
Square Feet of Building per Capita	0.18	32 of 33	24 of 32	27 of 33
Volumes per Capita	1.91	22 of 33	10 of 32	23 of 33
Circulation per Capita	3.88	28 of 33	25 of 32	28 of 33
Visits per Capita	3.26	27 of 33	18 of 32	23 of 33
Reference Transactions per Capita	0.11	16 of 33		
Program Attendance per 100 Population	21.52	19 of 33	13 of 32	19 of 33
Computers per 1,000 Population	1.26	11 of 33		
Computer Sessions per Capita	0.17	25 of 33		
Total Contacts per Capita <sup>1</sup>	7.65	30 of 33		
Hourly Measures				
Circulation per Hour Open	18.46	29 of 33		
Visits per Hour Open	15.51	28 of 33		
Computer Sessions per Hour Open	0.82	26 of 33		
Total Contacts per Hour Open	36.38	30 of 33		
Per Square Foot Measures				
Volumes per Square Foot	10.63	33 of 33		
Circulation per Square Foot	21.60	4 of 33		
Visits per Square Foot	18.14	2 of 33		
Total Contacts per Square Foot	42.57	2 of 33		
Staffing Measures				
Staff per 10,000 Population	3.10	24 of 33	14 of 32	28 of 33
Circulation per FTE Staff	12,520	21 of 33		
Total Contacts <sup>1</sup> per FTE Staff	24,678	23 of 33		

<sup>1</sup> Total contacts = Circulation + Visits + Reference Transactions + Program Attendance + Computer Sessions

**DERIVATIVE MEASURES (continued)**

	Number	2014 Rank	2009 Rank	2003 Rank
Expenditures per Capita \$	16.03	28 of 33	18 of 32	24 of 33
Operating Cost per Square Foot (annual) \$	89.19	32 of 33		
Operating Cost per Hour Open \$	76.23	3 of 33		
Operating Cost per Circulation \$	4.13	16 of 33		
Operating Cost per Contact \$	2.10	18 of 33		

**PEER COMPARISONS**

	2014 Expenditures per Capita		2014 SF per Capita
BRIDGEVILLE	\$ 24.62	BRIDGEVILLE	1.31
CORBIT-CALLOWAY	\$ 33.08	CORBIT-CALLOWAY	0.73
DELAWARE CITY	\$ 74.37	DELAWARE CITY	6.04
DELMAR	\$ 37.81	DELMAR	0.98
FRANKFORD	\$ 45.15	FRANKFORD	1.50
GARFIELD PARK	\$ -	GARFIELD PARK	0.50
GREENWOOD	\$ 78.00	GREENWOOD	1.85
<b>HARRINGTON</b>	<b>\$ 16.03</b>	<b>HARRINGTON</b>	<b>0.18</b>
NORTH WILMINGTON	\$ 43.60	NORTH WILMINGTON	0.62
SELBYVILLE	\$ 24.49	SELBYVILLE	0.65
Low	\$ -	Low	0.18
25th Percentile	\$ 24.52	25th Percentile	0.63
Median	\$ 35.44	Median	0.85
Mean	\$ 37.71	Mean	1.44
75th Percentile	\$ 44.76	75th Percentile	1.45
High	\$ 78.00	High	6.04



**PEER COMPARISONS (continued)**

	2014 FTE Staff per 10,000 Population		2014 Holdings per Capita
BRIDGEVILLE	5.79	BRIDGEVILLE	3.18
CORBIT-CALLOWAY	5.06	CORBIT-CALLOWAY	5.15
DELAWARE CITY	8.33	DELAWARE CITY	8.44
DELMAR	11.20	DELMAR	4.52
FRANKFORD	10.20	FRANKFORD	4.35
GARFIELD PARK	3.79	GARFIELD PARK	1.31
GREENWOOD	10.38	GREENWOOD	7.33
<b>HARRINGTON</b>	<b>3.10</b>	<b>HARRINGTON</b>	<b>1.91</b>
NORTH WILMINGTON	4.41	NORTH WILMINGTON	3.79
SELBYVILLE	4.68	SELBYVILLE	2.99
Low	3.10	Low	1.31
25th Percentile	4.48	25th Percentile	3.04
<i>Median</i>	5.43	<i>Median</i>	4.07
Mean	6.70	Mean	4.30
75th Percentile	9.73	75th Percentile	4.99
High	11.20	High	8.44

**PEER COMPARISONS (continued)**

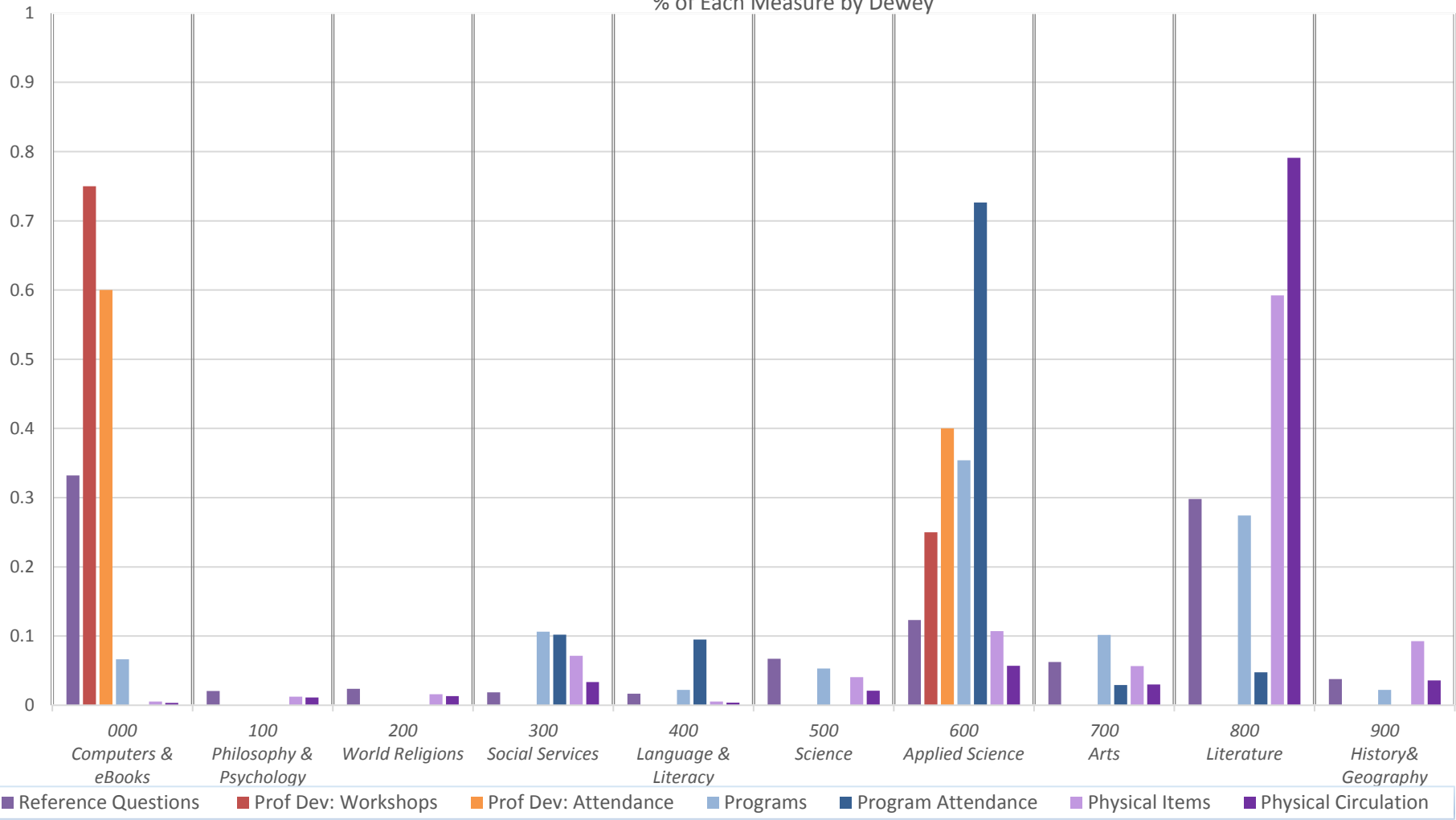
	2014 Visits per Capita		2014 Circulation per capita
BRIDGEVILLE	4.77	BRIDGEVILLE	6.32
CORBIT-CALLOWAY	5.64	CORBIT-CALLOWAY	6.83
DELAWARE CITY	10.46	DELAWARE CITY	9.24
DELMAR	9.04	DELMAR	12.10
FRANKFORD	5.91	FRANKFORD	7.06
GARFIELD PARK	4.46	GARFIELD PARK	1.44
GREENWOOD	6.96	GREENWOOD	12.35
<b>HARRINGTON</b>	<b>3.26</b>	<b>HARRINGTON</b>	<b>3.88</b>
NORTH WILMINGTON	14.58	NORTH WILMINGTON	3.65
SELBYVILLE	4.79	SELBYVILLE	5.12
Low	3.26	Low	1.44
25th Percentile	4.78	25th Percentile	4.19
Median	5.78	Median	6.58
Mean	6.99	Mean	6.80
75th Percentile	8.52	75th Percentile	8.70
High	14.58	High	12.35

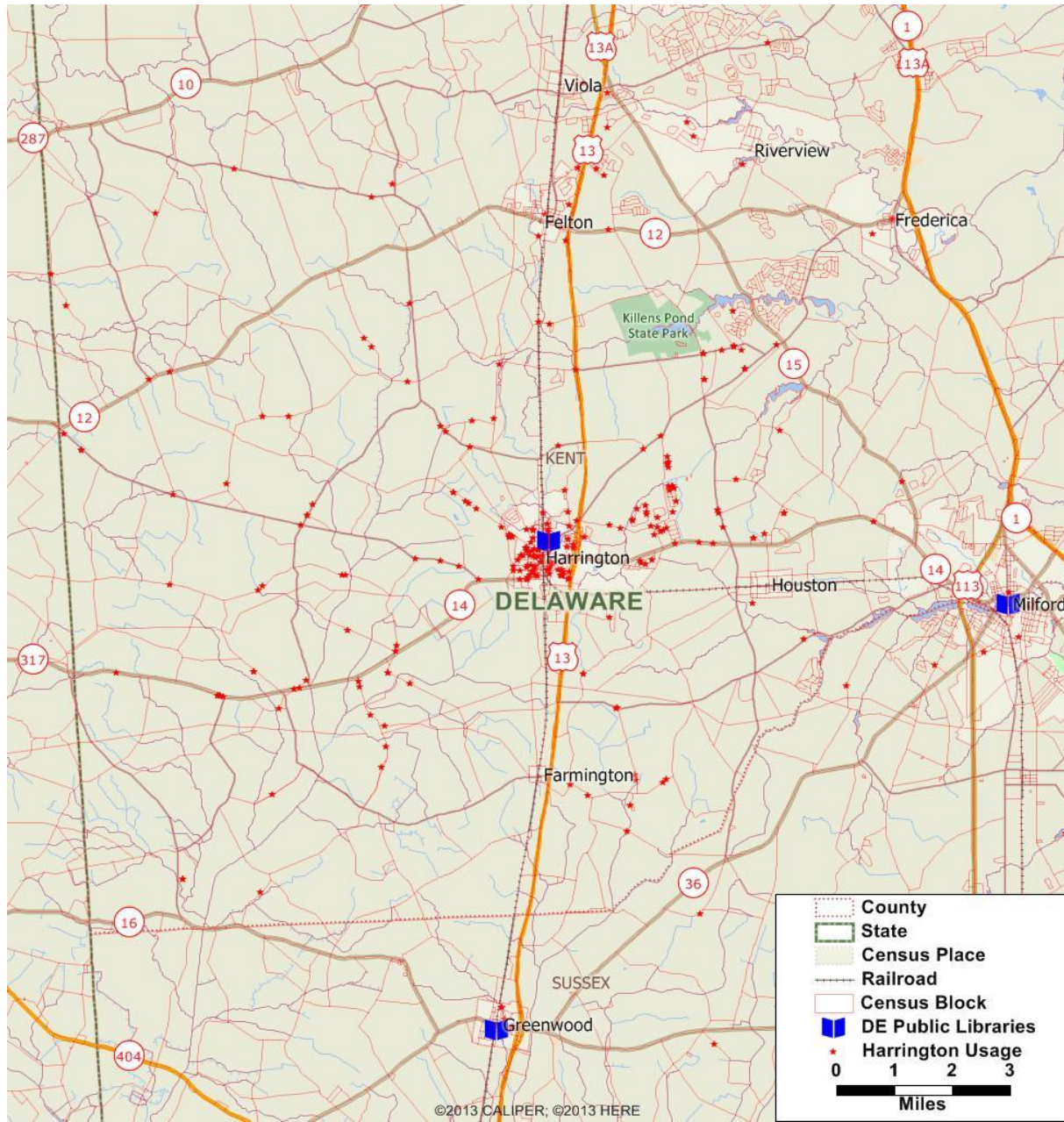
**PEER COMPARISONS (continued)**

	2014 Turnover Rate		2014 Program Attendance per 100 Population
BRIDGEVILLE	1.99	BRIDGEVILLE	45.72
CORBIT-CALLOWAY	1.33	CORBIT-CALLOWAY	77.50
DELAWARE CITY	1.10	DELAWARE CITY	17.46
DELMAR	2.68	DELMAR	121.66
FRANKFORD	1.62	FRANKFORD	61.29
GARFIELD PARK	1.10	GARFIELD PARK	8.67
GREENWOOD	1.69	GREENWOOD	76.20
<b>HARRINGTON</b>	<b>2.03</b>	<b>HARRINGTON</b>	<b>21.52</b>
NORTH WILMINGTON	0.96	NORTH WILMINGTON	38.28
SELBYVILLE	1.71	SELBYVILLE	67.88
Low	0.96	Low	8.67
25th Percentile	1.16	25th Percentile	25.71
Median	1.66	Median	53.51
Mean	1.62	Mean	53.62
75th Percentile	1.92	75th Percentile	74.12
High	2.68	High	121.66

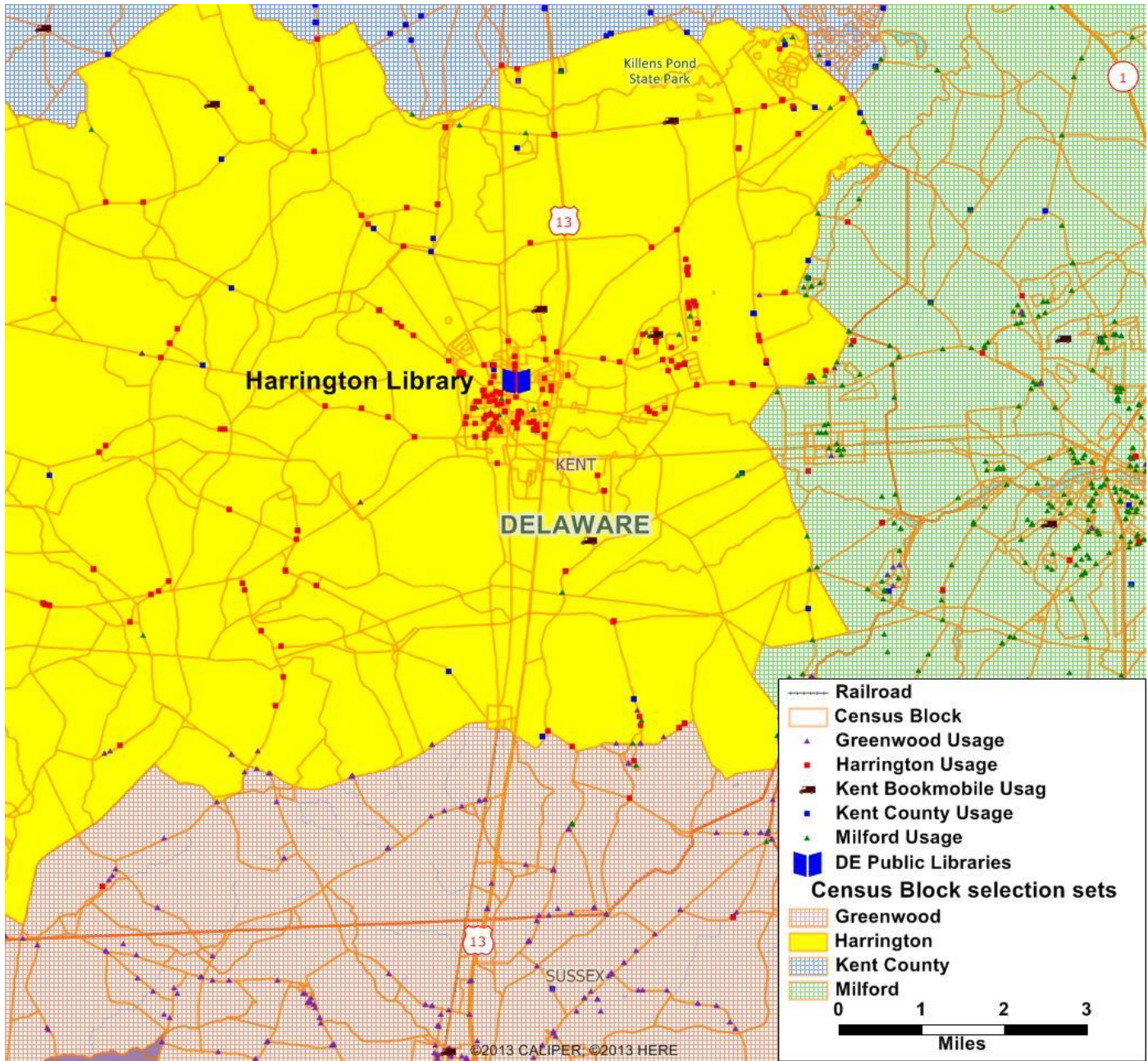
# FY14 Library Performance Measures, Harrington

% of Each Measure by Dewey









Harrington Library

DELAWARE

KENT

SUSSEX

Killens Pond State Park

13

13

1

--- Railroad  
 □ Census Block  
 ▲ Greenwood Usage  
 ■ Harrington Usage  
 ■ Kent Bookmobile Usag  
 ■ Kent County Usage  
 ▲ Milford Usage  
 ■ DE Public Libraries

**Census Block selection sets**  
 □ Greenwood  
 ■ Harrington  
 ■ Kent County  
 ■ Milford

0 1 2 3  
 Miles