

BEAR PUBLIC LIBRARY

Delaware Division of Libraries - 2009 Library Profiles

Address: 101 Governors Place
Bear, DE 19701

Contact Information:

Voice: (302) 838-3300
Fax: (302) 838-3307

Exterior Photo:

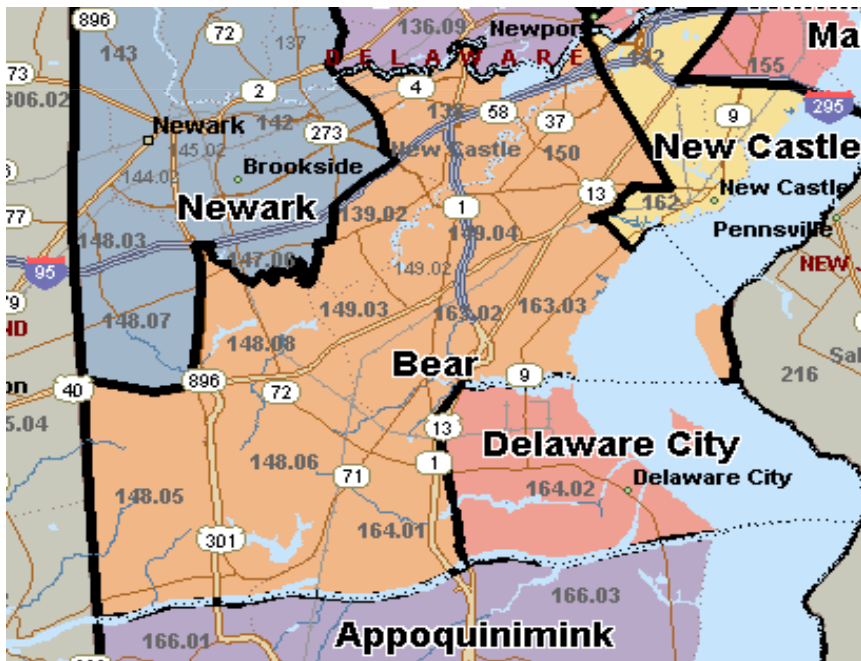
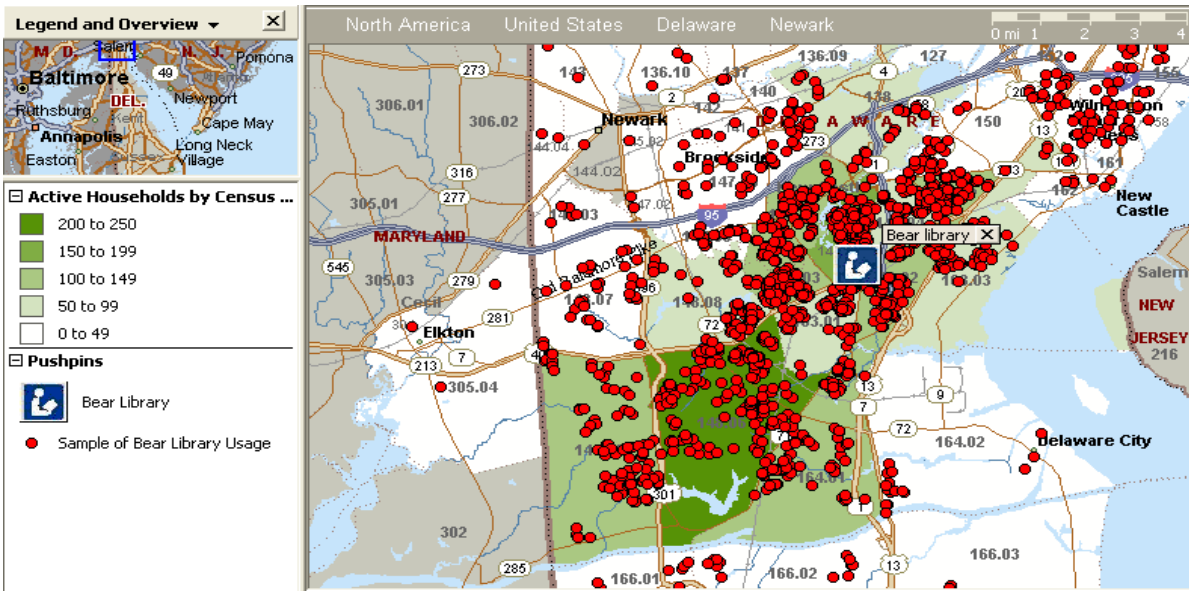


Library Type: Anchor

INPUTS

Estimated Size of Building (Gross Square Feet) :	25,000
Legal Service Population:	80,950
Estimated Service Population - 2008 (Census Tract Method):	147,488
Projected Service Population - 2013 (Census Tract Method):	157,121
Registered Borrowers:	50,974
Total 2007 Income:	\$ 1,509,516
Total 2007 Expenditures:	\$ 1,480,863
2007 Materials Expenditures:	\$ 285,711
Holdings (materials collection size):	119,206
ALA Accredited MLS Staff (FTEs):	2.63
Total Staff (FTEs):	13.48
Public Internet Terminals:	25
Number of Meeting Room Seats:	175

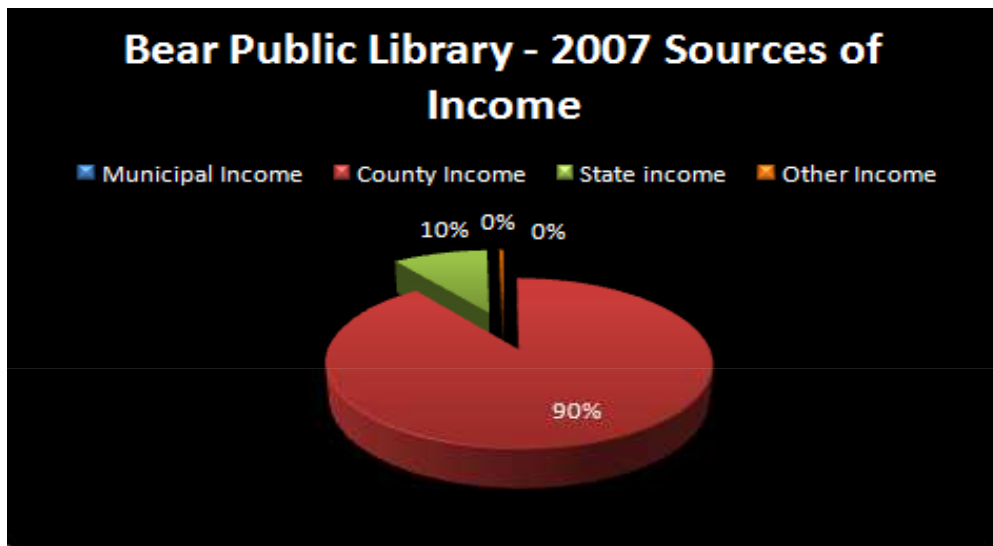
LIBRARY SERVICE AREA (CENSUS TRACT METHOD)



Hours of Operation:

Sunday: Closed
Monday: 10:00 AM - 9:00 PM
Tuesday: 10:00 AM - 9:00 PM
Wednesday: 10:00 AM - 9:00 PM
Thursday: 10:00 AM - 5:00 PM
Friday: 10:00 AM - 5:00 PM
Saturday: 10:00 AM - 5:00 PM

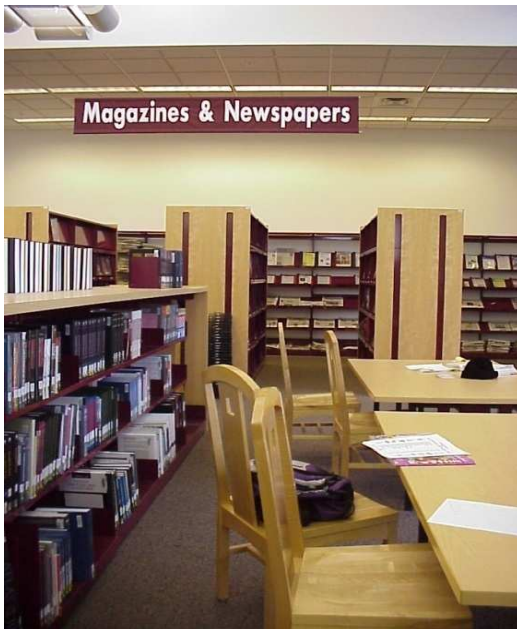
Estimated Annual Hours of Operation: 2,885



Interior Photo:



Interior Photo:

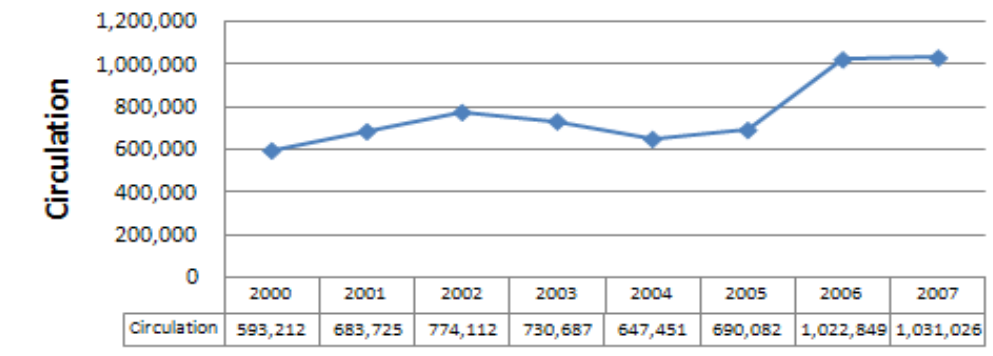


OUTPUTS:

2007 Total Circulation: 1,031,026
2007 Adult Circulation: 716,880
2007 Children's Circulation: 314,146

Circulation History:

**Bear Public Library Circulation History
2000 - 2007**



OUTPUTS (Continued):

Library Visits:	405,346
Number of Reference Transactions:	47,033
Number of Programs:	415
Program Attendance:	11,179
Number of Uses of Electronic Resources:	NA

DERIVATIVE MEASURES:

Circulation per Capita:	6.99
Library Visits per Capita:	2.75
Library Holdings per Capita:	0.81
Collection Turnover:	8.65
Materials Expenditures per Capita:	\$ 1.94
Square Feet of Library Space per Capita:	0.17
Circulation per Sq. Ft.:	41.24
Circulation per Hour Open:	357.37
Library Visits per Hour Open:	140.50
Cost per Circulation:	\$ 1.44
Cost per Hour Open:	\$ 513.30
Program Attendance per 100 Persons in Service Area:	7.58
MLS Staff per 10,000 Persons in Service Area:	0.18
Total Library Staff per 10,000 Persons in Service Area:	0.91

KEY COMPARATIVE MEASURES

Expenditures per Capita

<i>Bear Public Library</i>	\$ 10.04
Brandywine Hundred Library	\$ 31.21
Dover Public Library	\$ 16.00
The Wilmington Institute Library	\$ 41.55
First Quartile	\$ 14.51
Second Quartile	\$ 23.60
Third Quartile	\$ 33.79
Fourth Quartile	\$ 41.55

KEY COMPARATIVE MEASURES

Materials Expenditures per Capita

<i>Bear Public Library</i>	\$ 1.94
Brandywine Hundred Library	\$ 5.31
Dover Public Library	\$ 3.00
The Wilmington Institute Library	\$ 5.14
First Quartile	\$ 2.74
Second Quartile	\$ 4.07
Third Quartile	\$ 5.18
Fourth Quartile	\$ 5.31

Holdings per Capita

<i>Bear Public Library</i>	0.81
Brandywine Hundred Library	2.12
Dover Public Library	1.68
The Wilmington Institute Library	6.82
First Quartile	1.46
Second Quartile	1.90
Third Quartile	3.29
Fourth Quartile	6.82

Turnover Rate

<i>Bear Public Library</i>	8.65
Brandywine Hundred Library	7.43
Dover Public Library	3.10
The Wilmington Institute Library	0.65
First Quartile	2.49
Second Quartile	5.27
Third Quartile	7.74
Fourth Quartile	8.65

KEY COMPARATIVE MEASURES

Program Attendance per 100 Population Served

<i>Bear Public Library</i>	7.58
Brandywine Hundred Library	9.31
Dover Public Library	13.13
The Wilmington Institute Lib	42.85
First Quartile	8.88
Second Quartile	11.22
Third Quartile	20.56
Fourth Quartile	42.85

Number of Librarians (MLS and Non-MLS)

<i>Bear Public Library</i>	5.68
Brandywine Hundred Library	10.50
Dover Public Library	7.50
The Wilmington Institute Lib	8.50
First Quartile	7.04
Second Quartile	8.00
Third Quartile	9.00
Fourth Quartile	10.50

Total Staff

<i>Bear Public Library</i>	13.48
Brandywine Hundred Library	29.75
Dover Public Library	17.55
The Wilmington Institute Lib	31.50
First Quartile	16.53
Second Quartile	23.65
Third Quartile	30.19
Fourth Quartile	31.50

KEY COMPARATIVE MEASURES

Square Feet of Facility per Capita

<i>Bear Public Library</i>	0.17
Brandywine Hundred Library	0.49
Dover Public Library	0.22
The Wilmington Institute Lib	0.71
First Quartile	0.21
Second Quartile	0.36
Third Quartile	0.55
Fourth Quartile	0.71

Library Visits per Square Feet of Facility

<i>Bear Public Library</i>	16.21
Brandywine Hundred Library	12.68
Dover Public Library	23.22
The Wilmington Institute Lib	9.22
First Quartile	11.81
Second Quartile	14.45
Third Quartile	17.97
Fourth Quartile	23.22