

# Delaware Libraries - Library Profiles

**LIBRARY**                      **DELMAR PUBLIC LIBRARY**  
**ADDRESS**                      101 N. Bi-State Blvd.  
    Delmar, DE 19940

**TYPE OF LIBRARY:**  
 Small Community

**PHONE #** (302) 846-9894

**FAX #** (302) 846-3408

**HOURS**

Sunday	CLOSED
Monday	10:00 AM - 8:00 PM
Tuesday	10:00 AM - 8:00 PM
Wednesday	10:00 AM - 8:00 PM
Thursday	10:00 AM - 8:00 PM
Friday	10:00 AM - 5:00 PM
Saturday	10:00 AM - 2:00 PM

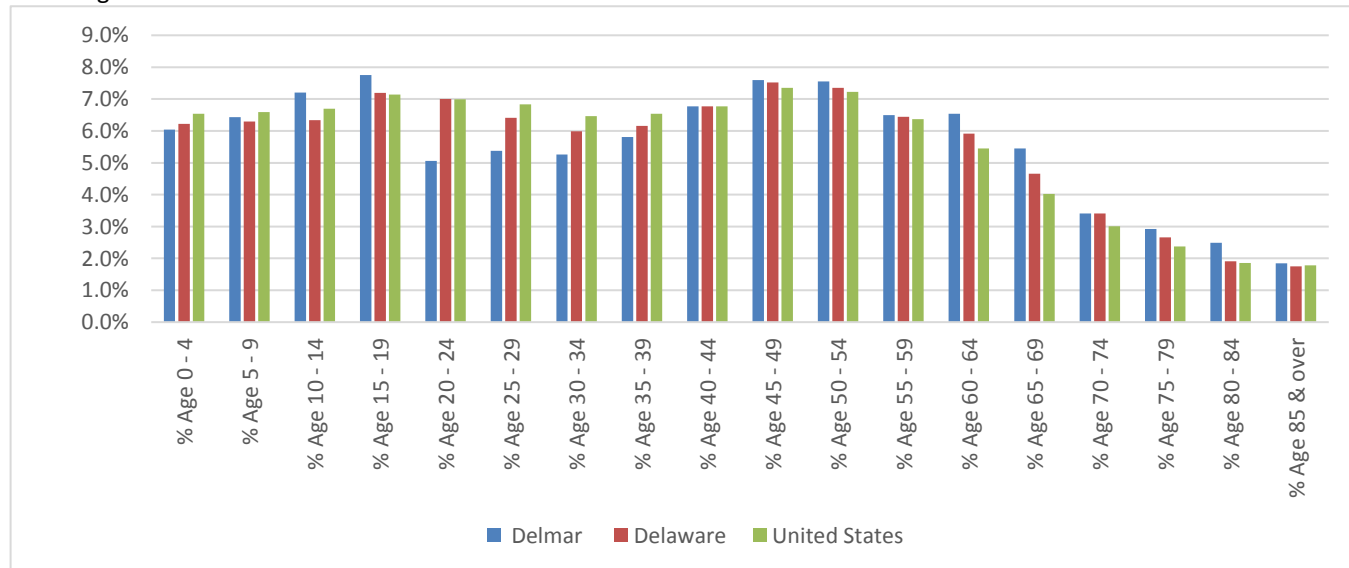


<b>SIZE OF FACILITY</b>	4,980 Square Feet
<b>YEAR BUILT</b>	0
<b>YEAR OF LAST MAJOR RENOVATION</b>	0
<b>YEAR OF LAST ADDITION</b>	0

<b>PRIMARY SERVICE POPULATION</b>	Delmar
2014 Primary Service Population*	5,097 Note: Population and per capita measures for this library include only Delaware residents
*(Unduplicated count using usage mapping at the census block level)	
DDL Service Population**	6,237
**University of Delaware using centroid method	

## PRIMARY SERVICE AREA POPULATION COHORTS

Estimated Population	Cohort	Delmar	Delaware	United States
308	% Age 0 - 4	6.0%	6.2%	6.5%
328	% Age 5 - 9	6.4%	6.3%	6.6%
367	% Age 10 - 14	7.2%	6.3%	6.7%
395	% Age 15 - 19	7.7%	7.2%	7.1%
258	% Age 20 - 24	5.1%	7.0%	7.0%
274	% Age 25 - 29	5.4%	6.4%	6.8%
268	% Age 30 - 34	5.3%	6.0%	6.5%
296	% Age 35 - 39	5.8%	6.2%	6.5%
345	% Age 40 - 44	6.8%	6.8%	6.8%
387	% Age 45 - 49	7.6%	7.5%	7.4%
385	% Age 50 - 54	7.6%	7.4%	7.2%
331	% Age 55 - 59	6.5%	6.4%	6.4%
333	% Age 60 - 64	6.5%	5.9%	5.4%
278	% Age 65 - 69	5.5%	4.7%	4.0%
174	% Age 70 - 74	3.4%	3.4%	3.0%
149	% Age 75 - 79	2.9%	2.7%	2.4%
127	% Age 80 - 84	2.5%	1.9%	1.9%
94	% Age 85 & over	1.8%	1.7%	1.8%



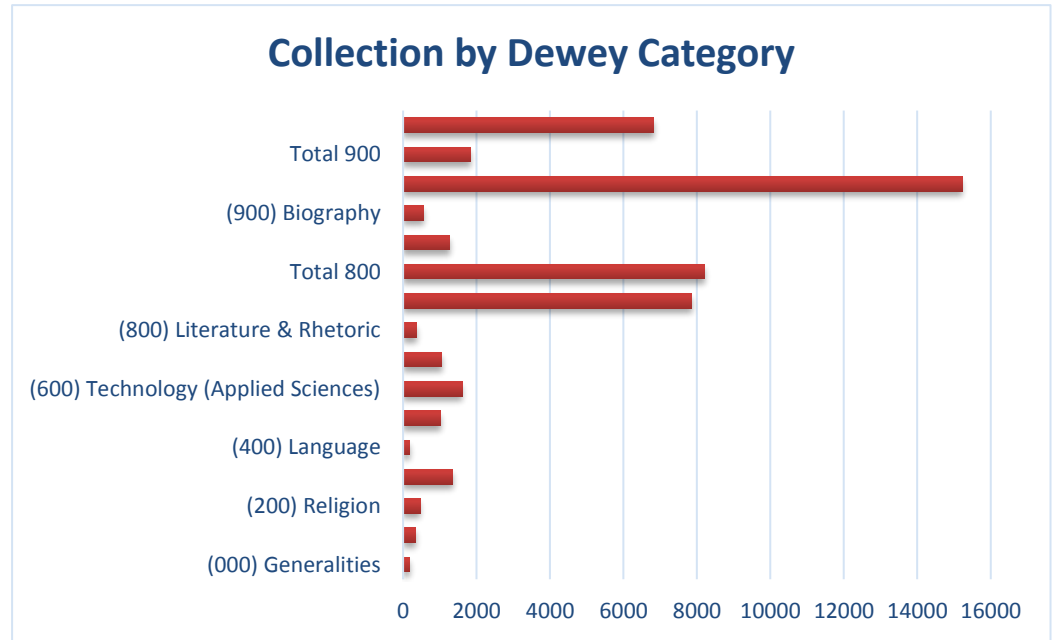
**INPUT DATA**

Annual Hours of Operation (2014)	2514
Annual Operational Costs (2014)	\$ 192,717.00
Staff in FTEs	5.71
Total Volumes/Items in Collection	22,993
Children's Volumes	8,856
Teen Volumes	1,461
Adult Volumes	12,676
Print Volumes	19,386
Non-Print/Media Volumes	3,607
Number of Public Computers	12
Number of Public Parking Spaces	0 Data not reported
Recommended Public Parking Spaces	20
Public Parking Spaces Surplus/Deficit	-20

**INPUT DATA (continued)**

Collection by Dewey Category

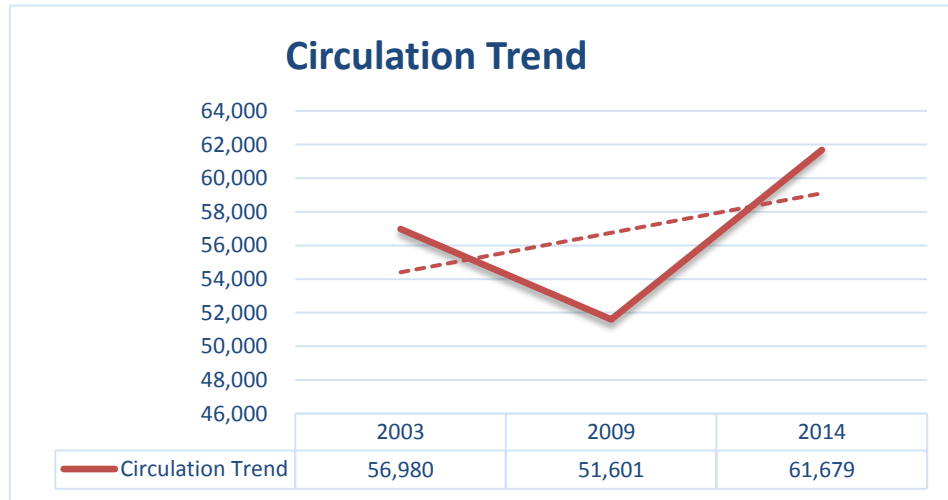
(000) Generalities	184
(100) Philosophy & Psychology	335
(200) Religion	464
(300) Social Sciences	1341
(400) Language	187
(500) Natural Sciences & Mathematics	1020
(600) Technology (Applied Sciences)	1608
(700) The Arts	1043
(800) Literature & Rhetoric	362
(800) Fiction	7848
Total 800	8210
(900) Geography & History	1273
(900) Biography	551
( All Non Dewey Total )	15220
Total 900	1824
Non-Dewey	6821



**OUTPUT DATA**

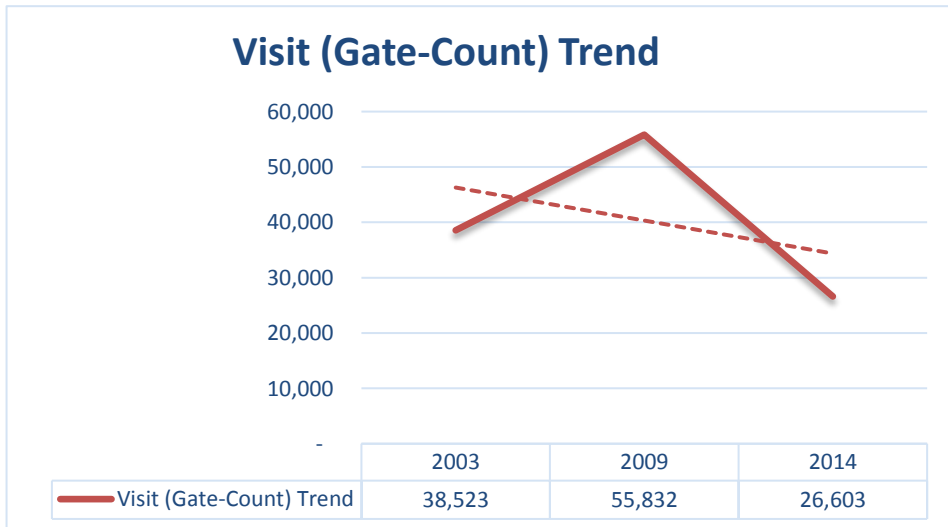
Circulation Trend

2003	56,980
2009	51,601
2014	61,679



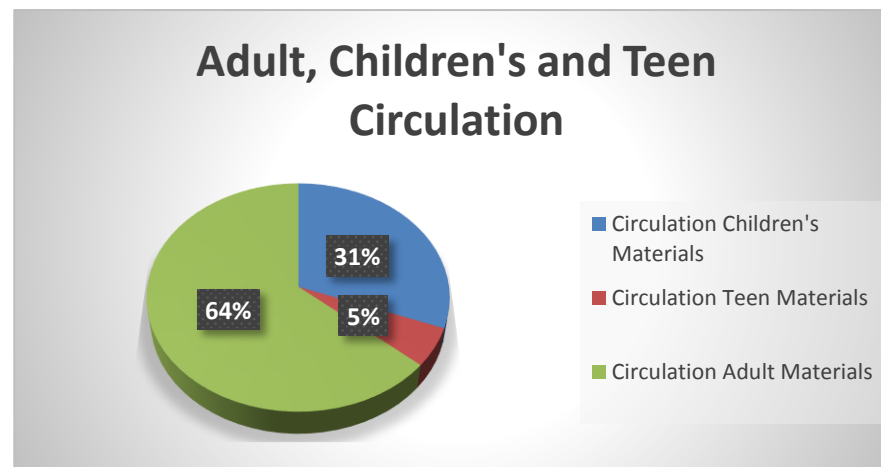
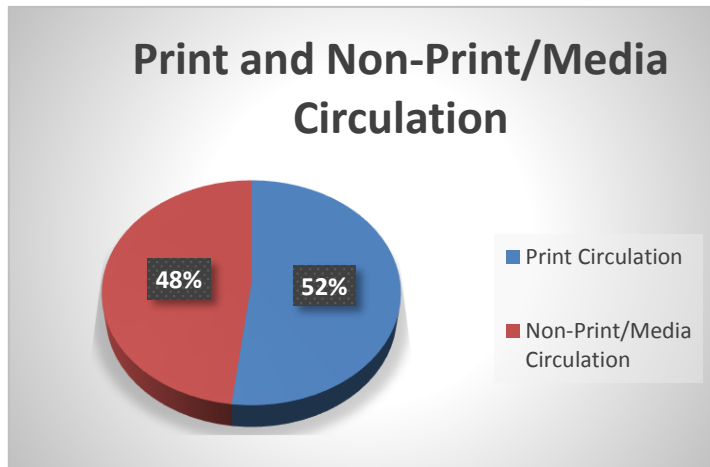
Visit (Gate-Count) Trend

2003	38,523
2009	55,832
2014	26,603



**OUTPUT DATA (continued)**

	Circulation	Circulation %
Print Circulation	30,938	51.95%
Non-Print/Media Circulation	28,618	48.05%
Circulation Children's Materials	18,321	30.76%
Circulation Teen Materials	3,275	5.50%
Circulation Adult Materials	37,960	63.74%



	Number	Rank
2014 Overdrive Circulation	1,861	28 of 33
2014 Circulation	61,679	25 of 33
2014 Visits (Gate-Count)*	46,067	26 of 33
2014 Reference Transactions*	412	25 of 33
2014 Program Attendance*	6,201	15 of 33
2014 Public Computer Sessions*	9,033	14 of 33
2014 Total # of Public Contacts <sup>1</sup>	123,483	24 of 33

<sup>1</sup> Total contacts = Circulation + Gate Count + Reference Transactions + Program Attendance + Computer Sessions

\* In a few instances, individual libraries have not reported all data elements of their FY 2014 statistics.

In these instances, measures reported for FY 2013 have been used.

**DERIVATIVE MEASURES**

	2014 Number	2014 Rank	2009 Rank	2003 Rank
Turnover Rate	2.68	16 of 33	19 of 32	13 of 33
Per Capita Measures				
Square Feet of Building per Capita	0.98	10 of 33	14 of 32	7 of 33
Volumes per Capita	4.52	4 of 33	26 of 32	7 of 33
Circulation per Capita	12.10	5 of 33	26 of 32	5 of 33
Visits per Capita	9.04	3 of 33	21 of 32	8 of 33
Reference Transactions per Capita	0.08	19 of 33		
Program Attendance per 100 Population	121.66	1 of 33	6 of 32	4 of 33
Computers per 1,000 Population	2.35	3 of 33		
Computer Sessions per Capita	1.77	2 of 33		
Total Contacts per Capita <sup>1</sup>	24.23	1 of 33		
Hourly Measures				
Circulation per Hour Open	24.53	26 of 33		
Visits per Hour Open	18.32	26 of 33		
Computer Sessions per Hour Open	3.59	14 of 33		
Total Contacts per Hour Open	49.12	27 of 33		
Per Square Foot Measures				
Volumes per Square Foot	4.63	21 of 33		
Circulation per Square Foot	12.39	13 of 33		
Visits per Square Foot	9.25	10 of 33		
Total Contacts per Square Foot	24.80	14 of 33		
Staffing Measures				
Staff per 10,000 Population	11.20	1 of 33	18 of 32	2 of 33
Circulation per FTE Staff	10,802	28 of 33		
Total Contacts <sup>1</sup> per FTE Staff	21,626	27 of 33		

<sup>1</sup> Total contacts = Circulation + Visits + Reference Transactions + Program Attendance + Computer Sessions

**DERIVATIVE MEASURES (continued)**

	Number	2014 Rank	2009 Rank	2003 Rank
Expenditures per Capita \$	37.81	10 of 33	22 of 32	8 of 33
Operating Cost per Square Foot (annual) \$	38.70	16 of 33		
Operating Cost per Hour Open \$	76.66	4 of 33		
Operating Cost per Circulation \$	3.12	8 of 33		
Operating Cost per Contact \$	1.56	5 of 33		

**PEER COMPARISONS**

	2014 Expenditures per Capita	2014 SF per Capita
BRIDGEVILLE	\$ 24.62	1.31
CORBIT-CALLOWAY	\$ 33.08	0.73
DELAWARE CITY	\$ 74.37	6.04
<b>DELMAR</b>	<b>\$ 37.81</b>	<b>0.98</b>
FRANKFORD	\$ 45.15	1.50
GARFIELD PARK	\$ -	0.50
GREENWOOD	\$ 78.00	1.85
HARRINGTON	\$ 16.03	0.18
NORTH WILMINGTON	\$ 43.60	0.62
SELBYVILLE	\$ 24.49	0.65
Low	\$ -	0.18
25th Percentile	\$ 24.52	0.63
Median	\$ 35.44	0.85
Mean	\$ 37.71	1.44
75th Percentile	\$ 44.76	1.45
High	\$ 78.00	6.04



PEER COMPARISONS (continued)

	2014 FTE Staff per 10,000 Population		2014 Holdings per Capita
BRIDGEVILLE	5.79	BRIDGEVILLE	3.18
CORBIT-CALLOWAY	5.06	CORBIT-CALLOWAY	5.15
DELAWARE CITY	8.33	DELAWARE CITY	8.44
<b>DELMAR</b>	<b>11.20</b>	<b>DELMAR</b>	<b>4.52</b>
FRANKFORD	10.20	FRANKFORD	4.35
GARFIELD PARK	3.79	GARFIELD PARK	1.31
GREENWOOD	10.38	GREENWOOD	7.33
HARRINGTON	3.10	HARRINGTON	1.91
NORTH WILMINGTON	4.41	NORTH WILMINGTON	3.79
SELBYVILLE	4.68	SELBYVILLE	2.99
Low	3.10	Low	1.31
25th Percentile	4.48	25th Percentile	3.04
<i>Median</i>	<i>5.43</i>	<i>Median</i>	<i>4.07</i>
Mean	6.70	Mean	4.30
75th Percentile	9.73	75th Percentile	4.99
High	11.20	High	8.44

PEER COMPARISONS (continued)

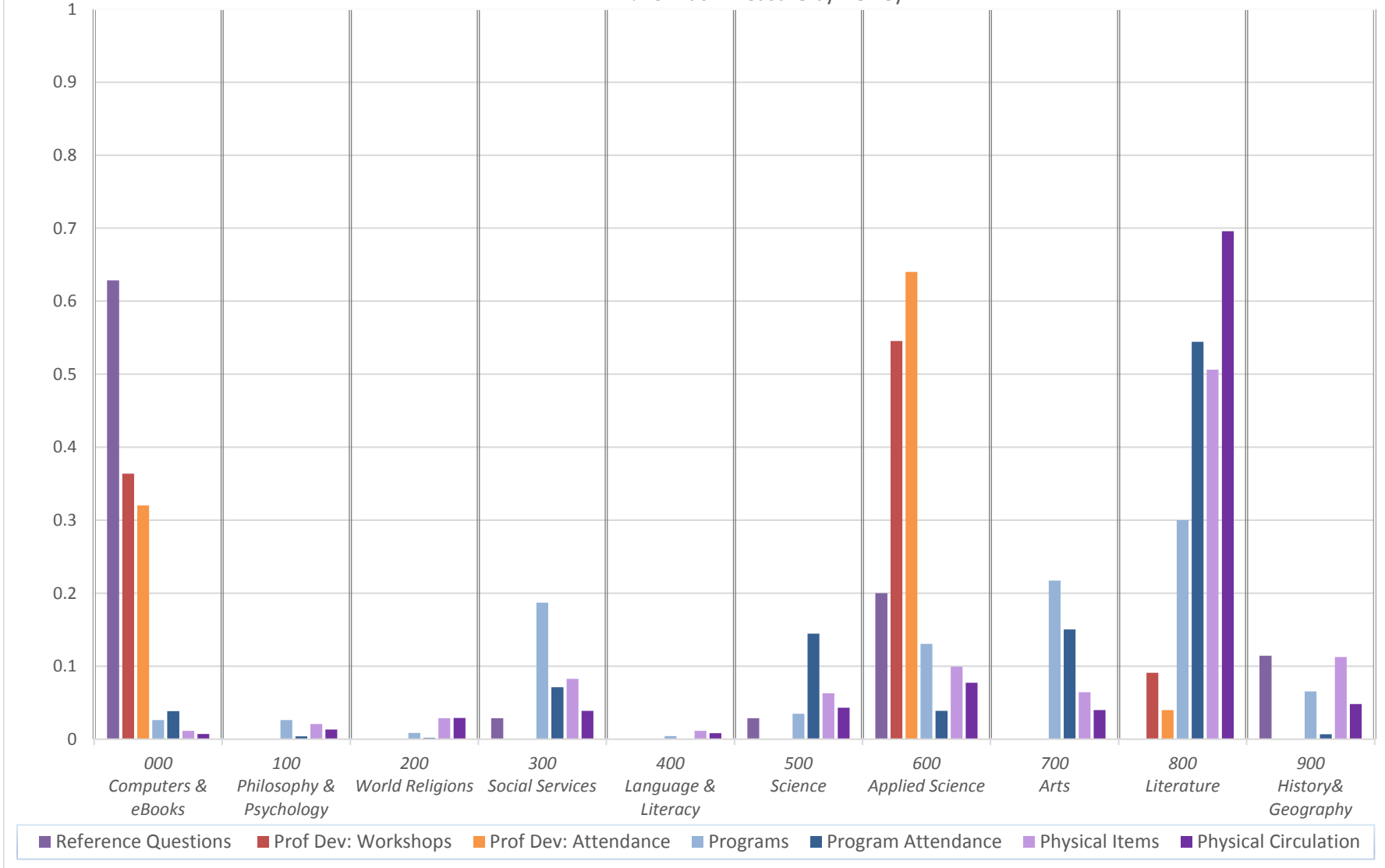
	2014 Visits per Capita		2014 Circulation per capita
BRIDGEVILLE	4.77	BRIDGEVILLE	6.32
CORBIT-CALLOWAY	5.64	CORBIT-CALLOWAY	6.83
DELAWARE CITY	10.46	DELAWARE CITY	9.24
<b>DELMAR</b>	<b>9.04</b>	<b>DELMAR</b>	<b>12.10</b>
FRANKFORD	5.91	FRANKFORD	7.06
GARFIELD PARK	4.46	GARFIELD PARK	1.44
GREENWOOD	6.96	GREENWOOD	12.35
HARRINGTON	3.26	HARRINGTON	3.88
NORTH WILMINGTON	14.58	NORTH WILMINGTON	3.65
SELBYVILLE	4.79	SELBYVILLE	5.12
Low	3.26	Low	1.44
25th Percentile	4.78	25th Percentile	4.19
Median	5.78	Median	6.58
Mean	6.99	Mean	6.80
75th Percentile	8.52	75th Percentile	8.70
High	14.58	High	12.35

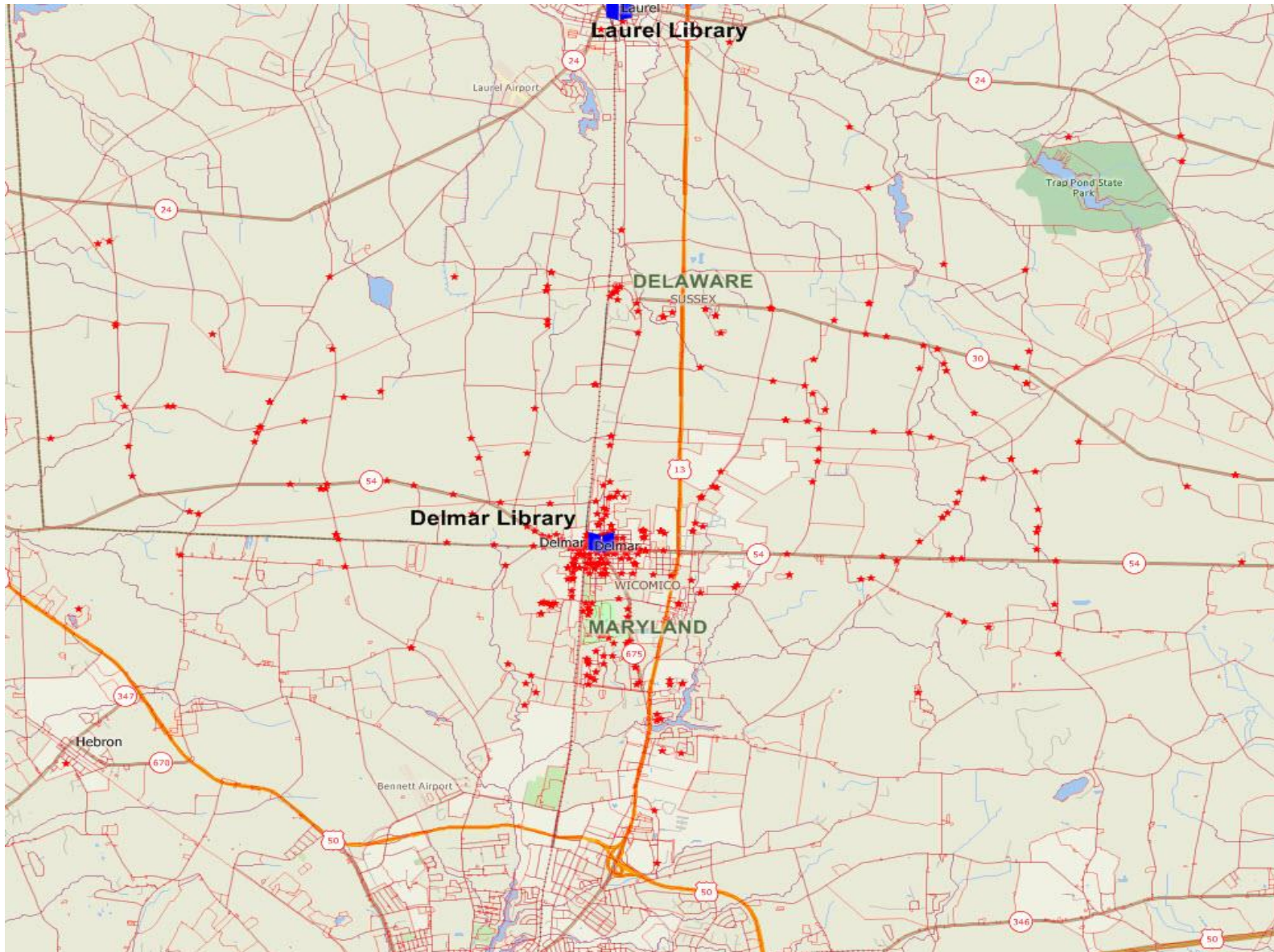
PEER COMPARISONS (continued)

	2014 Turnover Rate		2014 Program Attendance per 100 Population
BRIDGEVILLE	1.99	BRIDGEVILLE	45.72
CORBIT-CALLOWAY	1.33	CORBIT-CALLOWAY	77.50
DELAWARE CITY	1.10	DELAWARE CITY	17.46
<b>DELMAR</b>	<b>2.68</b>	<b>DELMAR</b>	<b>121.66</b>
FRANKFORD	1.62	FRANKFORD	61.29
GARFIELD PARK	1.10	GARFIELD PARK	8.67
GREENWOOD	1.69	GREENWOOD	76.20
HARRINGTON	2.03	HARRINGTON	21.52
NORTH WILMINGTON	0.96	NORTH WILMINGTON	38.28
SELBYVILLE	1.71	SELBYVILLE	67.88
Low	0.96	Low	8.67
25th Percentile	1.16	25th Percentile	25.71
Median	1.66	Median	53.51
Mean	1.62	Mean	53.62
75th Percentile	1.92	75th Percentile	74.12
High	2.68	High	121.66

### FY14 Library Performance Measures, Delmar

% of Each Measure by Dewey





Note: Usage map is for July 2014 because Library was closed during the sample period used for other libraries

